



AVINEA

THE NEXT INSPIRED LUXURY

HADAPSAR

SITE ADDRESS: FALCON STREET, DP ROAD, HADAPSAR, PUNE - 411028

OFFICE ADDRESS: 213, 2ND FLOOR AMANORA APEX, HADAPSAR, PUNE - 411028

WEBSITE: WWW.VYOMBUILDCON.CO.IN

OFFICIAL NUMBER: +91 90939 69798 / +91 90939 59697

DISCLAIMER: THE IMAGES ILLUSTRATE THE FUTURE DEVELOPMENT OF THE LARGER LAYOUT AS WELL, SUBMITTED TO MAHARERA. THE MAHARERA REGISTRATION NO. P52100079047 HAS BEEN OBTAINED FOR THE RESIDENTIAL PROJECT AVINEA PHASE 1 FOR TOWER 3 AND TOWER 4. THE MAHARERA REGISTRATION NO. PR1261012501542 HAS BEEN OBTAINED FOR THE RESIDENTIAL PROJECT AVINEA PHASE 2 FOR TOWER 5 TOWER 6 AND TOWER 7. ALL IMAGES USED HEREIN ARE FOR ILLUSTRATIVE/PRESENTATION PURPOSES ONLY AND AESTHETIC LIBERTIES ARE TAKEN TO GIVE AN IDEA OF THE INTENDED CONCEPT AND VISION FOR THE FINAL INTENDED DEVELOPMENT OF THE UNITS & THE BUILDING. THESE PLANS ARE INTENDED TO GIVE A GENERAL BROAD INDICATION OF THE BUILDINGS AND UNITS. TERMS AND CONDITIONS APPLY. THIS PRINTED MATERIAL DOES NOT CONSTITUTE AN OFFER OR CONTRACT OF ANY KIND BETWEEN THE PROMOTER AND THE RECIPIENT. SALES OF UNITS IN THIS DEVELOPMENT WILL BE GOVERNED SOLELY BY THE TERMS OUTLINED IN THE SALES AGREEMENT BETWEEN THE PARTIES AND THE DETAILS IN THIS MATERIAL DO NOT INFLUENCE SUCH TRANSACTIONS.





PROJECT HALLMARKS

10.5 ACRE GATED
ESTATE FEATURING 7
MAJESTIC TOWERS.

4-STAR DOUBLE-HEIGHT
ENTRANCE LOBBY FOR
STATELY ARRIVALS.

NESTLED IN PUNE'S
MOST COVETED
CORRIDOR OF
HADAPSAR.

55+ CURATED
EXPERIENCES AT THE
GROUND AND PODIUM
LEVEL.

2, 3 & 4 BED
VASTU-FRIENDLY,
WELL-LIT AND
VENTILATED HOMES.

A VIBRANT
NEIGHBOURHOOD WITH
WORLD-CLASS
SCHOOLS, MALLS AND
HOSPITALS.

EXPANSIVE
RESIDENCES WITH
STUNNING VIEWS.

AVINEA

THE NEXT INSPIRED LUXURY

HADAPSAR

VYOM
— BUILD CON —

ALTAIR T7
(2 & 3 BHKS)
PHASE 2

AVANA T6
(3 BHKS)
PHASE 2

ARIANA T5
(3 BHKS)
PHASE 2

AMORE T4
(2 & 3 BHKS)
PHASE 1

ALTUS T3
(3 BHKS)
PHASE 1

AVANTE T2
(3 & 4 BHKS)
FUTURE
DEVELOPMENT

AVALON T1
(3 & 4 BHKS)
FUTURE
DEVELOPMENT

AVINEA

THE NEXURY OF DEBUT

—
THE MAJESTIC GATEWAY



THE NEXURY OF ARRIVALS

—
GRAND 4-STAR LOBBY
TO WELCOME YOU EVERY DAY.



THE NEXURY OF RELAXATION AND WELLNESS

AVENUES TO KEEP YOUR BODY
RELAXED AND MIND REFRESHED.

A modern, multi-story apartment building with a rooftop tennis court. The court is purple with white lines. A man in a black shirt and white shorts is playing tennis. The background features palm trees and flowering plants. The text 'THE NEXURY OF AN ACTIVE LIFESTYLE' is overlaid on the right side of the image.

THE NEXURY OF AN ACTIVE LIFESTYLE

FIND YOUR EVERYDAY MANTRA
TO STAY IN TOP SHAPE

A woman with long dark hair, wearing a long, flowing white dress with gold floral patterns and a high slit, is playing a violin. She is standing in a large, modern living room with high ceilings, large windows, and contemporary furniture. The room is bathed in warm, golden light from the windows. The text "THE NEXURY OF CREATIVE EXPRESSION." is overlaid on the right side of the image in a gold, serif font.

THE NEXURY OF CREATIVE EXPRESSION.

INDULGE IN ART, CRAFTS,
CREATIVE PURSUITS AND RELAXED WORKING.



THE NEXURY OF COMMUNITY LIVING.

CURATED FACILITIES TO ENGAGE
WITH A LIKE-MINDED COMMUNITY.



MASTER LAYOUT



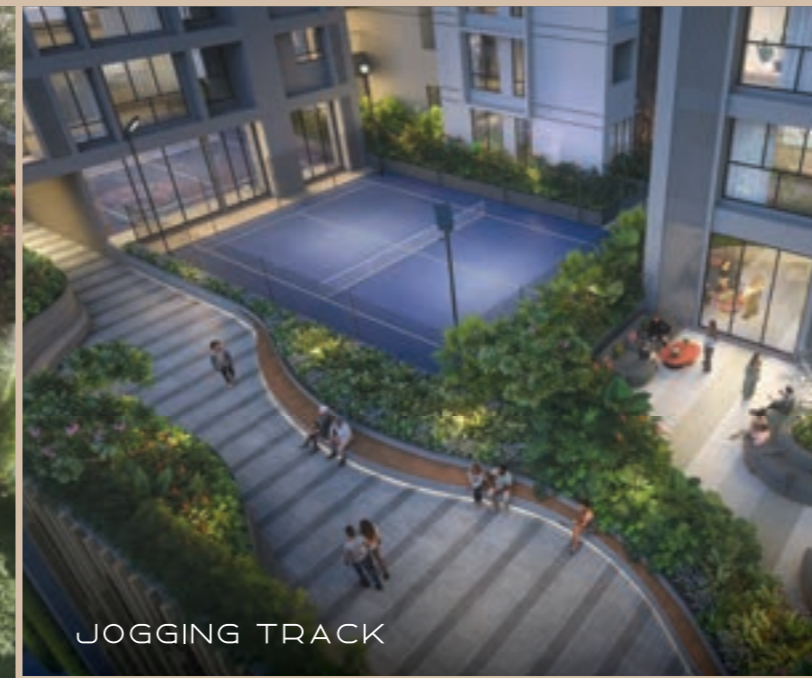
THE NEXURY OF 2 LEVEL EXPERIENCES

- | | |
|---|---------------------------|
| 1. ENTRY PLAZA-NORTH | 29. OXYGEN PARK |
| 2. ENTRY PALZA-WEST | 30. CROSS FIT TRAINING |
| 3. CLUBHOUSE-CASTLE | 31. ADVENTURE PLAY PARK |
| 4. CLUBHOUSE-CITADEL | 32. JUNIOR FOOTBALL |
| 5. BANQUET-MANOR | 33. BOX CRICKET |
| 6. YOGA HALL | 34. SKATING RINK |
| 7. ZUMBA HALL | 35. BADMINTON COURTS |
| 8. SWIMMING POOL WITH JACUZZI (25 X 9M) | 36. BARBECUE DECK |
| 9. MULTI-PURPOSE COURT | 37. DINE & CAFE |
| 10. PARTY LAWN WITH STAGE | 38. MOVIE THEATRE |
| 11. COMMUNITY CENTRE | 39. SENIOR CITIZEN LOUNGE |
| 12. SWIMMING POOL | 40. COURT OF LANTERN |
| 13. HEATED SWIMMING POOL | 41. SPA |
| 14. SWING COURT | 42. GUEST SUITES |
| 15. HAMMOCK PARK | 43. PARTY LAWN |
| 16. STAR GAZING DECK | 44. EAST GATE |
| 17. GYM 1 | 45. PET PARK |
| 18. INDOOR GAMES ROOM | 46. JOGGING TRACK |
| 19. READING COURT | 47. SEATING ALCOVES |
| 20. MUSIC ROOM | 48. CHIT CHAT CORNER |
| 21. PADDLE BALL COURT | 49. OXYGEN PARK |
| 22. LIBRARY | 50. EXERCISE STATION |
| 23. CO-WORKING SPACE | 51. PLAY FOUNTEN |
| 24. MINI GOLF | 52. VISITOR'S CAR PARK |
| 25. KID'S PLAY PARK | 53. TEENAGER'S CORNER |
| 26. CRECHE | 54. OUTDOOR SEATING |
| 27. DANCE STUDIO | 55. GYM 2 |
| 28. CO-WORKING SPACE | 56. VIEWING DECK |
| | 57. CRICKET PITCH |

● GROUND LEVEL ● PODIUM LEVEL



BADMINTON COURTS, BOX CRICKET & SKATING RINK



JOGGING TRACK



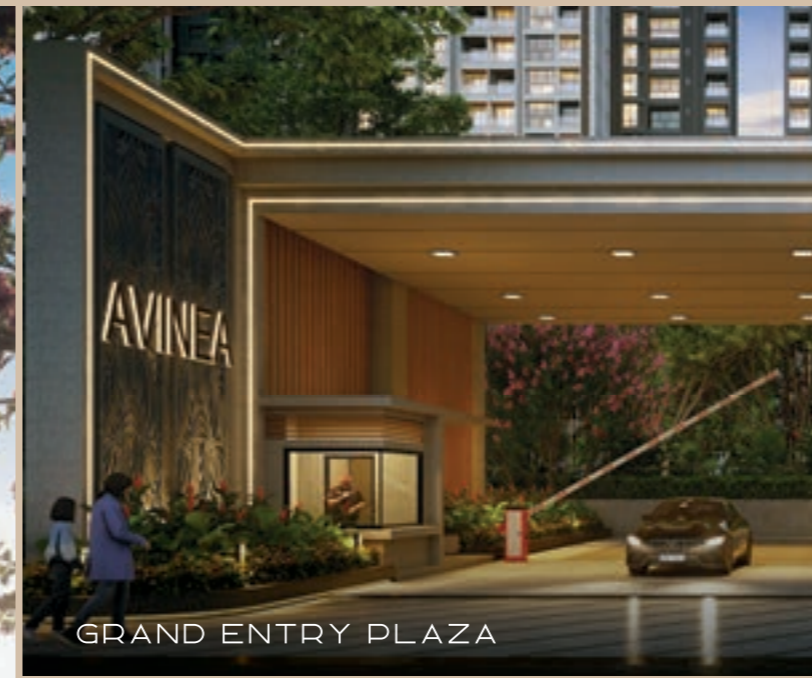
COURT OF LANTERNS



CLUB CITADEL



SWIMMING POOL



GRAND ENTRY PLAZA



KID'S PLAY PARK



OXYGEN PARK WITH EXERCISE STATION



CLUB CASTLE, COMMUNITY CENTRE & PARTY LAWN



PADDLE BALL COURT



MINI GOLF



ADVENTURE PLAY PARK

SPECIFICATION

INTERNAL FINISH

600 x 1200MM VITRIFIED TILES FOR FLOORING- (AGL/EQUIVALENT)
ANTI-SKID FLOOR TILES FOR BALCONIES/TERRACES
GYPSUM FINISH FOR WALLS AND CEILING
OBD PAINT FINISH FOR WALL [ASIAN/NEROLAC/OR EQUIVALENT
BUILDING INTERNAL FLOOR LOBBY WALLS - TEXTURE PAINT

KITCHEN

AGLOR EQUIVALENT FULL BODY SLAB FOR KITCHEN PLATFORM WITH S.S. SINK
TILES FOR KITCHEN DADO UPTO 2 FEET
PROVISION FOR WASHING MACHINE IN DRY TERRACE
GAS LEAK DETECTOR [FOR MNGL]
GAS PIPELINE [MNGL]

DOORS / WINDOWS

BOTH SIDE LAMINATED FLUSH DOOR
POWDER COATED ALUMINUM SLIDING WINDOWS/SLIDING DOOR WITH MOSQUITO NET.
MARBLE / GRANITE/ FULL BODY TILE SILL.
VIDEO DOOR PHONE.
BIOMETRIC LOCK

ELECTRICAL

LEGRAND OR EQUIVALENT SWITCHBOARDS.
AC PROVISION IN ALL ROOMS WITH OUTDOOR LEDGE
PROVISION FOR AUTOMATION [LIMITED POINTS]
POLYCAB OR EQUIVALENT CABLES FOR ELECTRICAL WIRING
INVERTER PROVISION INTERNET PROVISION

BATHROOM

600X 1200MM DADO TILES AND 600 X 600 FLOORING[AGL/EQUIVALENT]
KOHLER/OR EQUIVALENT BATHROOM FITTINGS
SOLAR WATER SUPPLY ONLY MASTER BEDROOM

COMMON AREA

4 TIER SECURITY- MAIN GATE, LOBBY GATE, CCTV IN COMMON AREAS, BIOMETRIC LOCKS,
FIREFIGHTING WATER SPRINKLERS, SMOKE DETECTORS AND FIRE ALARM SYSTEMS IN FLAT
AND COMMON AREAS AS PER NORMS.
DESIGNATED SOCIETY OFFICE
SEWAGE TREATMENT PLANT
GARBAGE CHUTE
COMMON PARKING FOR GUEST
DG BACKUP FOR COMMON AREAS .
ELEGANT FINISH LOBBY WITH RECEPTION
4 ELEVATORS PER TOWER

2 BHK



3 BHK



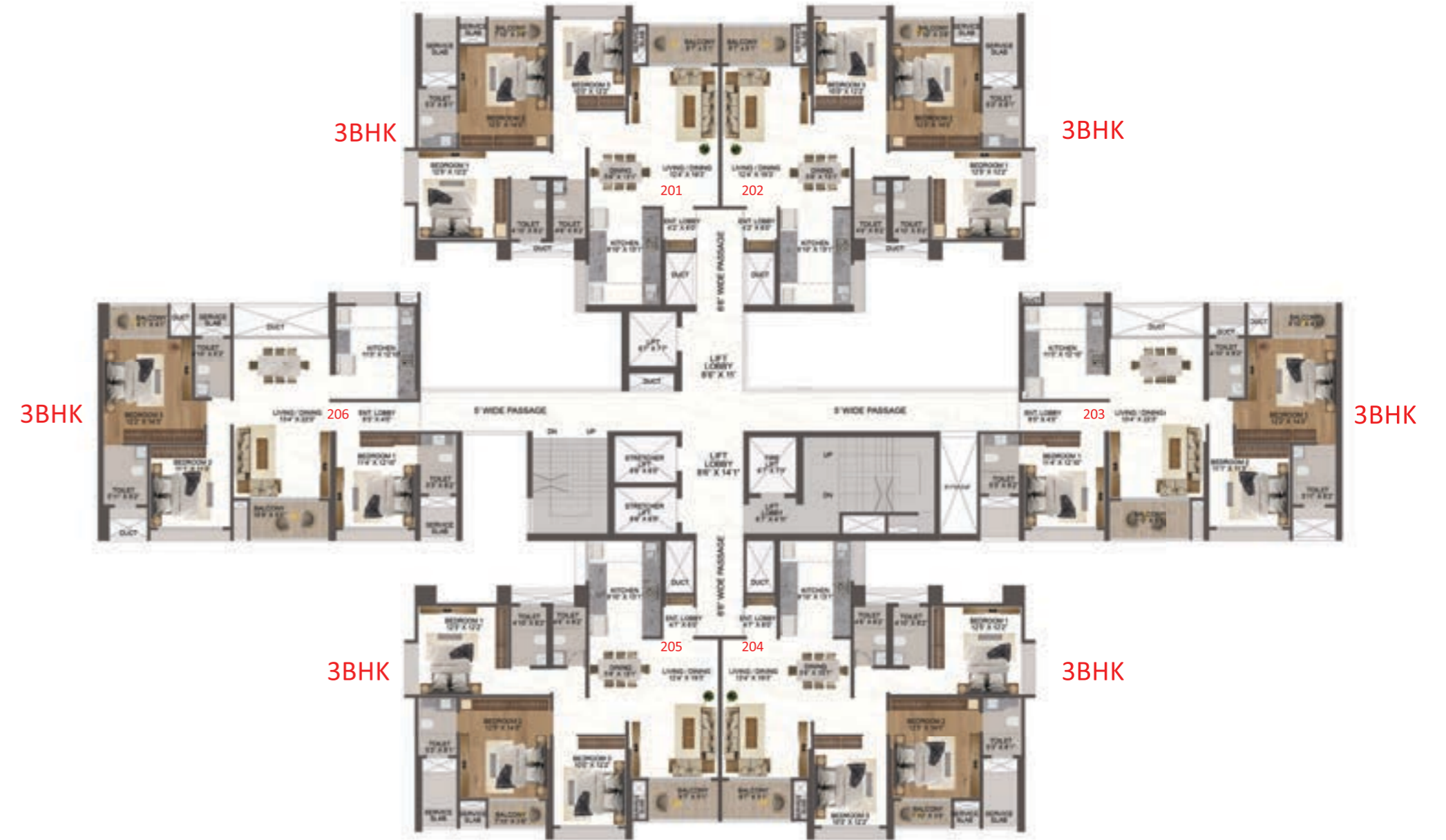
3 BHK



TOWER 3, 5 & 6
TYPICAL FLOOR PLAN



SALEABLE AREA STATEMENT TYPICAL FLOOR FOR TOWER - 3, 5 & 6							
FLAT NO.	TYPE	CARPET		OPEN BAL		TOTAL CARPET	
		SQ.M	SQ.FT	SQ.M	SQ.FT	SQ.M	SQ.FT
201	3BHK	107.07	1152.50	6.91	74.38	113.98	1226.88
202	3BHK	107.07	1152.50	6.91	74.38	113.98	1226.88
203	3BHK	106.54	1146.80	8.54	91.92	115.08	1238.72
204	3BHK	107.07	1152.50	6.91	74.38	113.98	1226.88
205	3BHK	107.07	1152.50	6.91	74.38	113.98	1226.88
206	3BHK	106.27	1143.89	8.15	87.73	114.42	1231.62
TOTAL SALEABLE AREA							10328.99



UNIT 201

TYPICAL FLOOR PLAN
3 BHK LAYOUT



SALEABLE AREA STATEMENT TYPICAL FLOOR FOR TOWER - 3							
FLAT NO.	TYPE	CARPET		OPEN BAL		TOTAL CARPET	
		SQ.M	SQ.FT	SQ.M	SQ.FT	SQ.M	SQ.FT
201	3BHK	107.07	1152.50	6.91	74.38	113.98	1226.88

There can be a variance of +/-3% in the carpet area due to design and construction variances.



UNIT 202

TYPICAL FLOOR PLAN
3 BHK LAYOUT



SALEABLE AREA STATEMENT TYPICAL FLOOR FOR TOWER - 3							
FLAT NO.	TYPE	CARPET		OPEN BAL		TOTAL CARPET	
		SQ.M	SQ.FT	SQ.M	SQ.FT	SQ.M	SQ.FT
202	3BHK	107.07	1152.50	6.91	74.38	113.98	1226.88

There can be a variance of +/-3% in the carpet area due to design and construction variances.



UNIT 204

TYPICAL FLOOR PLAN
3 BHK LAYOUT



SALEABLE AREA STATEMENT TYPICAL FLOOR FOR TOWER - 3							
FLAT NO.	TYPE	CARPET		OPEN BAL		TOTAL CARPET	
		SQ.M	SQ.FT	SQ.M	SQ.FT	SQ.M	SQ.FT
204	3BHK	107.07	1152.50	6.91	74.38	113.98	1226.88

There can be a variance of +/-3% in the carpet area due to design and construction variances.



UNIT 205

TYPICAL FLOOR PLAN
3 BHK LAYOUT



SALEABLE AREA STATEMENT TYPICAL FLOOR FOR TOWER - 3							
FLAT NO.	TYPE	CARPET		OPEN BAL		TOTAL CARPET	
		SQ.M	SQ.FT	SQ.M	SQ.FT	SQ.M	SQ.FT
205	3BHK	107.07	1152.50	6.91	74.38	113.98	1226.88

There can be a variance of +/-3% in the carpet area due to design and construction variances.



UNIT 203

TYPICAL FLOOR PLAN
3 BHK LAYOUT



SALEABLE AREA STATEMENT TYPICAL FLOOR FOR TOWER - 3							
FLAT NO.	TYPE	CARPET		OPEN BAL		TOTAL CARPET	
		SQ.M	SQ.FT	SQ.M	SQ.FT	SQ.M	SQ.FT
203	3BHK	106.54	1146.80	8.54	91.92	115.08	1238.72

There can be a variance of +/-3% in the carpet area due to design and construction variances.



UNIT 206

TYPICAL FLOOR PLAN
3 BHK LAYOUT



SALEABLE AREA STATEMENT TYPICAL FLOOR FOR TOWER - 3							
FLAT NO.	TYPE	CARPET		OPEN BAL		TOTAL CARPET	
		SQ.M	SQ.FT	SQ.M	SQ.FT	SQ.M	SQ.FT
206	3BHK	106.27	1143.89	8.15	87.73	114.42	1231.62

There can be a variance of +/-3% in the carpet area due to design and construction variances.



TOWER 3, 5 & 6
REFUGE FLOOR PLAN



SALEABLE AREA STATEMENT REFUGE FLOOR FOR TOWER - 3, 5 & 6							
FLAT NO.	TYPE	CARPET		OPEN BAL		TOTAL CARPET	
		SQ.M	SQ.FT	SQ.M	SQ.FT	SQ.M	SQ.FT
101	3BHK	107.07	1152.50	6.91	74.38	113.98	1226.88
102	3BHK	107.07	1152.50	6.91	74.38	113.98	1226.88
103	3BHK	106.54	1146.80	8.54	91.92	115.08	1238.72
105	4BHK	153.78	1655.29	11.63	125.19	165.41	1780.47
106	3BHK	106.27	1143.89	8.15	87.73	114.42	1231.62
TOTAL SALEABLE AREA							9386.39



UNIT 105

REFUGE FLOOR PLAN
4 BHK LAYOUT



SALEABLE AREA STATEMENT REGUGE FLOOR FOR TOWER - 3							
FLAT NO.	TYPE	CARPET		OPEN BAL		TOTAL CARPET	
		SQ.M	SQ.FT	SQ.M	SQ.FT	SQ.M	SQ.FT
105	4BHK	153.78	1655.29	11.63	125.19	165.41	1780.47



UNIT 01

COUPLET FLOOR PLAN
6.5 BHK LAYOUT



SALEABLE AREA STATEMENT COUPLET FLOOR FOR TOWER - 3, 5 & 6							
FLAT NO.	TYPE	CARPET		OPEN BAL		TOTAL CARPET	
		SQ.M	SQ.FT	SQ.M	SQ.FT	SQ.M	SQ.FT
01	5BHK	214.70	2311.03	14.02	150.91	228.72	2461.94



UNIT 03

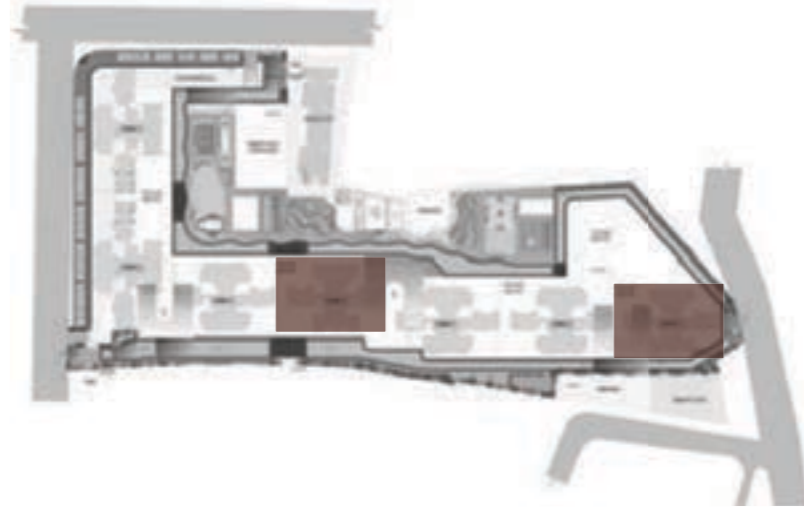
COUPLET FLOOR PLAN
6.5 BHK LAYOUT



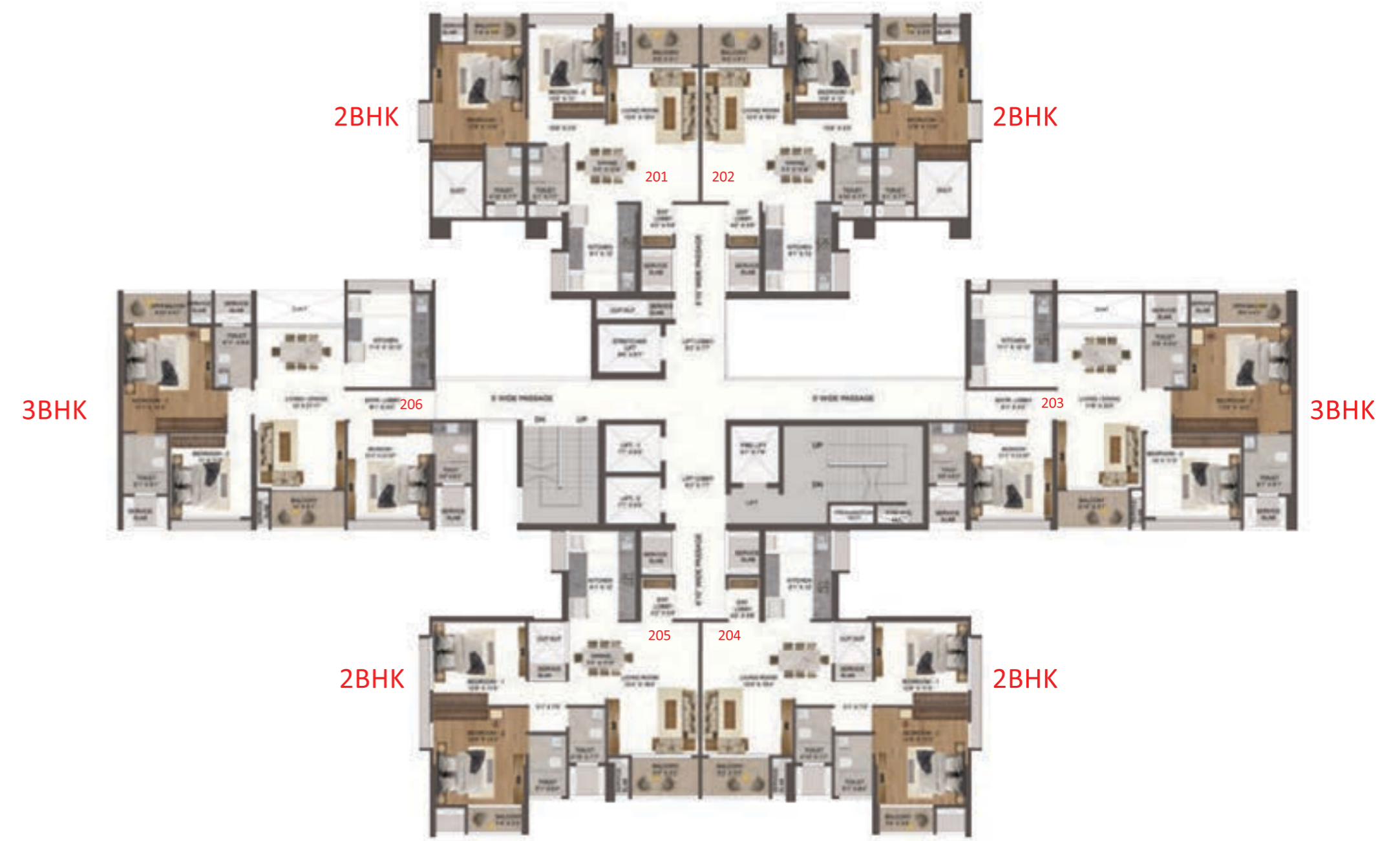
SALEABLE AREA STATEMENT COUPLET FLOOR FOR TOWER - 3, 5 & 6							
FLAT NO.	TYPE	CARPET		OPEN BAL		TOTAL CARPET	
		SQ.M	SQ.FT	SQ.M	SQ.FT	SQ.M	SQ.FT
03	5BHK	218.78	2354.95	14.02	150.91	232.80	2505.86



TOWER 4 & 7
TYPICAL FLOOR PLAN



SALEABLE AREA STATEMENT TYPICAL FLOOR FOR TOWER - 4							
FLAT NO.	TYPE	CARPET		OPEN BAL		TOTAL CARPET	
		SQ.M	SQ.FT	SQ.M	SQ.FT	SQ.M	SQ.FT
201	2BHK	81.23	874.36	6.62	71.26	87.85	945.62
202	2BHK	81.23	874.36	6.62	71.26	87.85	945.62
203	3BHK	109.04	1173.71	8.16	87.83	117.23	1261.54
204	2BHK	82.57	888.78	6.61	71.15	89.18	959.93
205	2BHK	82.57	888.78	6.61	71.15	89.18	959.93
206	3BHK	104.66	1126.56	8.05	86.65	112.71	1213.21
							6286.17
TOTAL SALEABLE AREA							8800.64



UNIT 201

TYPICAL FLOOR PLAN
2 BHK LAYOUT



SALEABLE AREA STATEMENT TYPICAL FLOOR FOR TOWER - 4							
FLAT NO.	TYPE	CARPET		OPEN BAL		TOTAL CARPET	
		SQ.M	SQ.FT	SQ.M	SQ.FT	SQ.M	SQ.FT
201	2BHK	81.23	874.36	6.62	71.26	87.85	945.62

There can be a variance of +/-3% in the carpet area due to design and construction variances.



UNIT 202

TYPICAL FLOOR PLAN
2 BHK LAYOUT



SALEABLE AREA STATEMENT TYPICAL FLOOR FOR TOWER - 4							
FLAT NO.	TYPE	CARPET		OPEN BAL		TOTAL CARPET	
		SQ.M	SQ.FT	SQ.M	SQ.FT	SQ.M	SQ.FT
202	2BHK	81.23	874.36	6.62	71.26	87.85	945.62

There can be a variance of +/-3% in the carpet area due to design and construction variances.



UNIT 204

TYPICAL FLOOR PLAN
2 BHK LAYOUT



SALEABLE AREA STATEMENT TYPICAL FLOOR FOR TOWER - 4							
FLAT NO.	TYPE	CARPET		OPEN BAL		TOTAL CARPET	
		SQ.M	SQ.FT	SQ.M	SQ.FT	SQ.M	SQ.FT
204	2BHK	82.57	888.78	6.61	71.15	89.18	959.93

There can be a variance of +/-3% in the carpet area due to design and construction variances.



UNIT 205

TYPICAL FLOOR PLAN
2 BHK LAYOUT



SALEABLE AREA STATEMENT TYPICAL FLOOR FOR TOWER - 4							
FLAT NO.	TYPE	CARPET		OPEN BAL		TOTAL CARPET	
		SQ.M	SQ.FT	SQ.M	SQ.FT	SQ.M	SQ.FT
205	2BHK	82.57	888.78	6.61	71.15	89.18	959.93

There can be a variance of +/-3% in the carpet area due to design and construction variances.



UNIT 203

TYPICAL FLOOR PLAN
3 BHK LAYOUT



SALEABLE AREA STATEMENT TYPICAL FLOOR FOR TOWER - 4 & 7							
FLAT NO.	TYPE	CARPET		OPEN BAL		TOTAL CARPET	
		SQ.M	SQ.FT	SQ.M	SQ.FT	SQ.M	SQ.FT
203	3BHK	109.07	1174.03	8.16	87.83	117.23	1261.86

There can be a variance of +/-3% in the carpet area due to design and construction variances.



UNIT 206

TYPICAL FLOOR PLAN
3 BHK LAYOUT

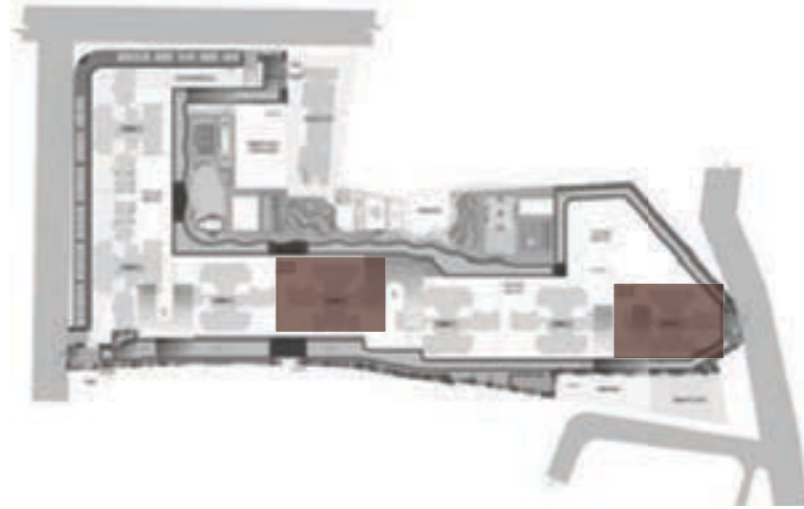


SALEABLE AREA STATEMENT TYPICAL FLOOR FOR TOWER - 4							
FLAT NO.	TYPE	CARPET		OPEN BAL		TOTAL CARPET	
		SQ.M	SQ.FT	SQ.M	SQ.FT	SQ.M	SQ.FT
206	3BHK	104.66	1126.56	8.05	86.65	112.71	1213.21

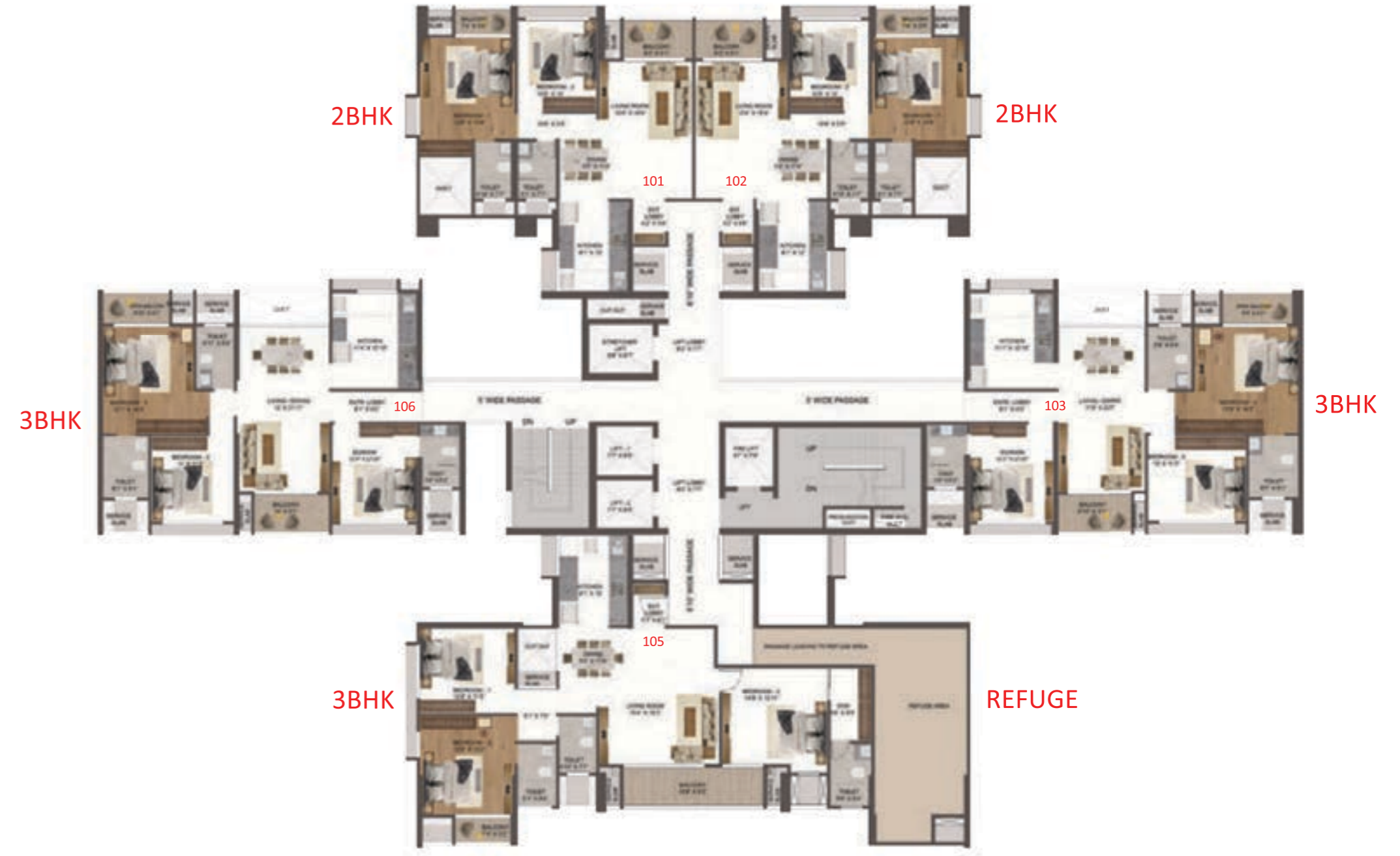
There can be a variance of +/-3% in the carpet area due to design and construction variances.



TOWER 4 & 7
REFUGE FLOOR PLAN



SALEABLE AREA STATEMENT REFUGE FLOOR FOR TOWER - 4							
FLAT NO.	TYPE	CARPET		OPEN BAL		TOTAL CARPET	
		SQ.M	SQ.FT	SQ.M	SQ.FT	SQ.M	SQ.FT
101	2BHK	81.23	874.36	6.62	71.26	87.85	945.62
102	2BHK	81.23	874.36	6.62	71.26	87.85	945.62
103	3BHK	109.07	1174.03	8.16	87.83	117.23	1261.86
105	3BHK	116.61	1255.19	11.17	120.23	127.78	1375.42
106	3BHK	104.66	1126.56	8.05	86.65	112.71	1213.21
						533.42	5741.73
TOTAL SALEABLE AREA						8038.41	



UNIT 105

REFUGE FLOOR PLAN
3 BHK LAYOUT



SALEABLE AREA STATEMENT REFUGE FLOOR FOR TOWER - 4							
FLAT NO.	TYPE	CARPET		OPEN BAL		TOTAL CARPET	
		SQ.M	SQ.FT	SQ.M	SQ.FT	SQ.M	SQ.FT
105	3BHK	116.61	1255.19	11.17	120.23	127.78	1375.42



UNIT 101

COUPLET FLOOR PLAN
4.5 BHK LAYOUT



SALEABLE AREA STATEMENT COUPLET FLOOR FOR TOWER - 4 & 7							
FLAT NO.	TYPE	CARPET		OPEN BAL		TOTAL CARPET	
		SQ.M	SQ.FT	SQ.M	SQ.FT	SQ.M	SQ.FT
01	4BHK	164.84	1774.34	13.41	144.35	178.25	1918.68



UNIT 103

COUPLET FLOOR PLAN
4.5 BHK LAYOUT



SALEABLE AREA STATEMENT COUPLET FLOOR FOR TOWER - 4 & 7							
FLAT NO.	TYPE	CARPET		OPEN BAL		TOTAL CARPET	
		SQ.M	SQ.FT	SQ.M	SQ.FT	SQ.M	SQ.FT
03	4BHK	170.03	1830.20	13.41	144.35	183.44	1974.55





AN ADDRESS OF NEXURIOUS EXCLUSIVE STREETSCAPE

—
THE ULTIMATE BLEND OF FASHION,
CONVENIENCE, AND ICONIC RETAIL &
OFFICE SPACES

FALCON STREET

THE NEXURY OF SUPERIOR CONNECTIVITY

CENTRALLY LOCATED IN THE EASTERN CORRIDOR WITH EXCELLENT COMMUTING CHOICES.

SCHOOL

WISDOM WORLD SCHOOL - 1 MIN
BILLABONG SCHOOL - 1 MIN
NARAYANA TECHNO SCHOOL - 1 MIN
PAWAR PUBLIC SCHOOL - 2 MIN
AMANORA SCHOOL - 4 MIN
HDFC SCHOOL - 4 MIN
CHATURBHUJ NARSEE SCHOOL - 5 MIN

SHOPPING

FALCON STREET - 0 MIN
AMANORA MALL - 4 MIN
SEASONS MALL - 5 MIN
93 AVENUE MALL - 12 MIN
NYATI PALAZA, KHARADI - 15 MIN
PHOENIX MALL, VIMAN NAGAR - 30 MIN

WORK

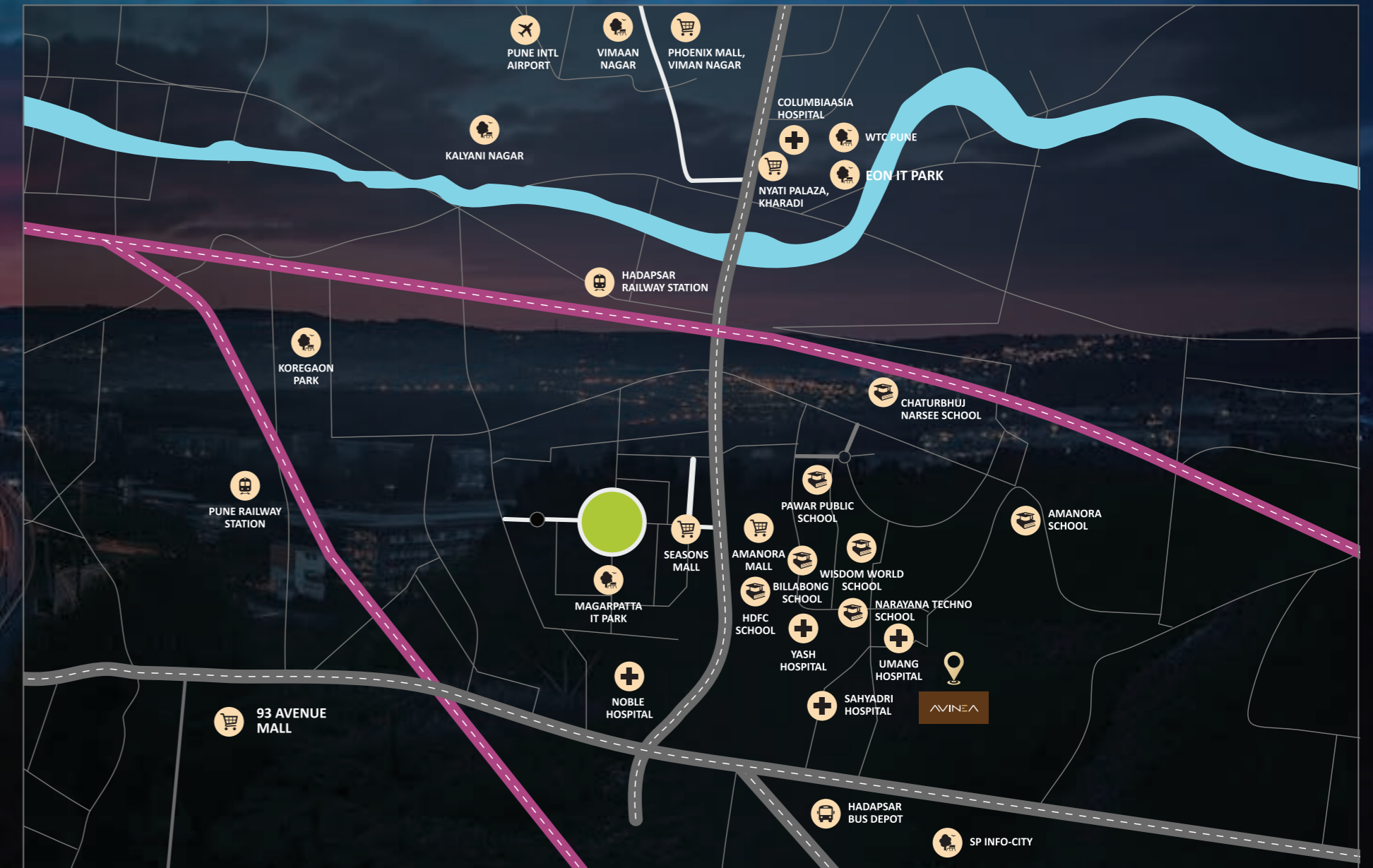
MAGARPATTA IT PARK - 5 MIN
SP INFO-CITY - 15 MIN
KOREGAON PARK - 16 MIN
EON IT PARK - 20 MIN
KALYANI NAGAR - 20 MIN
WTC, PUNE - 25 MIN
VIMAAN NAGAR - 30 MIN

PUBLIC INFRA

HADAPSAR BUS DEPOT - 3 MIN
HADAPSAR RAILWAY STATION - 7 MIN
PUNE RAILWAY STATION - 30 MIN
PUNE INTERNATIONAL AIRPORT - 35 MIN

HOSPITALS

UMANG HOSPITAL - 1 MIN
YASH HOSPITAL - 2 MIN
SAHYADRI HOSPITAL - 4 MINS
NOBLE HOSPITAL - 7 MIN
COLUMBIAASIA HOSPITAL - 17 MINS



LOCATION MAP

THE NEXURY OF VISION

BUILDING TOMORROW'S SKYLINE, TODAY.



AR. VIVEK BHOLE

EXEMPLIFYING DESIGN
THAT THINKS FORWARD

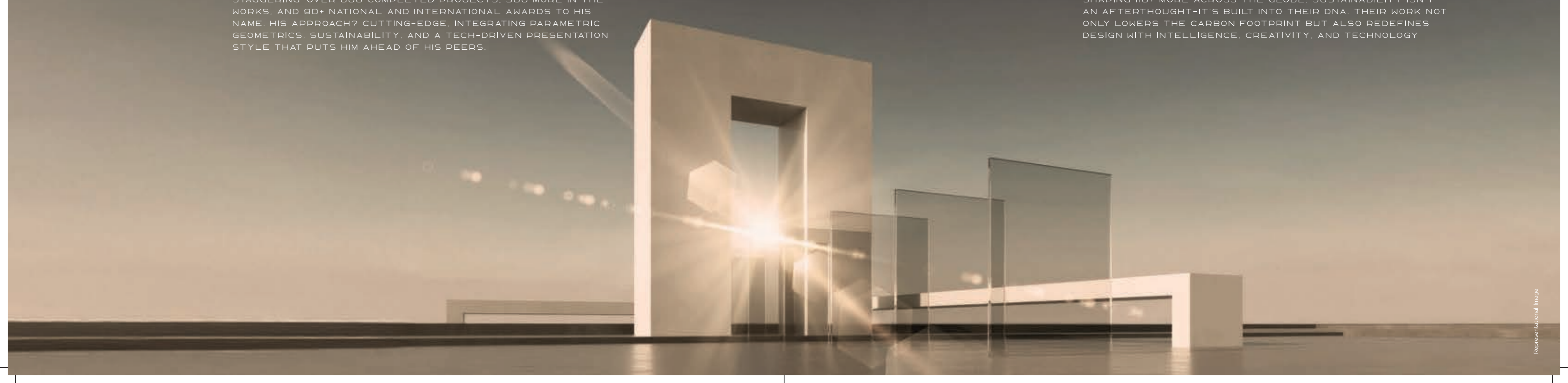
SOME ARCHITECTS DESIGN BUILDINGS, AR. VIVEK BHOLE DESIGNS LEGACIES. WITH A POWERHOUSE TEAM OF OVER 200 PROFESSIONALS AND A PRESENCE IN SIX MAJOR CITIES, HE'S BEEN REDEFINING SKYLINES FOR NEARLY THREE DECADES. HIS NUMBERS? STAGGERING-OVER 800 COMPLETED PROJECTS, 500 MORE IN THE WORKS, AND 90+ NATIONAL AND INTERNATIONAL AWARDS TO HIS NAME. HIS APPROACH? CUTTING-EDGE, INTEGRATING PARAMETRIC GEOMETRICS, SUSTAINABILITY, AND A TECH-DRIVEN PRESENTATION STYLE THAT PUTS HIM AHEAD OF HIS PEERS.



AR. SWAPNIL KSHIRSAGAR

THE MASTERMIND BEHIND
MONUMENTAL CREATIONS

INNOVATION ISN'T JUST A BUZZWORD FOR AR. SWAPNIL KSHIRSAGAR- IT'S A WAY OF LIFE. AS THE FOUNDER OF DESIGN 11, HE LEADS A TEAM OF VISIONARY DESIGNERS WHO HAVE TRANSFORMED OVER 400 PROJECTS AND ARE CURRENTLY SHAPING 110+ MORE ACROSS THE GLOBE. SUSTAINABILITY ISN'T AN AFTERTHOUGHT-IT'S BUILT INTO THEIR DNA. THEIR WORK NOT ONLY LOWERS THE CARBON FOOTPRINT BUT ALSO REDEFINES DESIGN WITH INTELLIGENCE, CREATIVITY, AND TECHNOLOGY



THE NEXURY OF PARTNERSHIP

WHEN GREAT MINDS COME TOGETHER

STRUCTURAL RCC



G. A. BHILARE CONSULTANTS PVT. LTD.
CONSULTING ENGINEERS | STRUCTURAL DESIGNERS
CHARTERED ENGINEER | GOVT. REGD. VALUERS

MEP

SACHIN GURUBETTI



LANDSCAPE
MR. VIKAS LABBA

